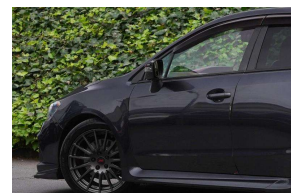


2017 Subaru Levorg 2.0GT-S STi 4WD/



30+ Years Helping Kiwis into Quality Cars
Trade-Ins Welcome - Finance Specialists



VEHICLE INFORMATION

Cash Price

Includes GST

\$30,560

+ on-road-costs

Finance this vehicle
from only

\$193.06

per week*



Gain peace of mind
with Mechanical
Breakdown
Insurance. Ask us
how.

Body
5 door, Station Wagon

Odometer
70,855 km

Engine
2000 cc

Fuel Type
Petrol

Transmission
Automatic

Fuel Saver Rating
2 out of 6 stars

VIN
-

Reg No.

-

Ext Colour
Grey

History
-

Seats
5 seats

Interior
-

Audio
-

Stock ID
60862

Features / Comments

Very good looking Turbo Subaru Wagon loaded with luxury and technology with Premium Black Half Leather seats, Radar Cruise and the safety of LDW & FCM

2017 Subaru Levorg 2.0GT S Turbo Wagon 4x4
2000cc Petrol Turbo 4WD Automatic / Tiptronic

Loaded with STI and other Goodies:

- TEIN In Car Adjustable Suspension (LVV Certified)
- Full STI Aero Bodykit
- STI Spoiler
- STI Multi Spoke Alloy Wheels
- STI Flat Bottom Steering Wheel



Tauranga, Phone 0800 575 672, Email hayden@gvi.kiwi

Corner of Hewletts Rd and Waimarie St, Mount Maunganui, Tauranga, 3118

*Finance calculation based on a 36 month term, 20.0% deposit and a and with an example annual fixed interest rate of 12.25%. Actual interest rate may be higher or lower. Includes an establishment fee of \$395 and a monthly maintenance fee of \$8.50. Full term amount payable of \$36,230 (\$30,118 finance + \$6,112 deposit). Estimate only, not an offer of finance. Terms, conditions and lending criteria apply.