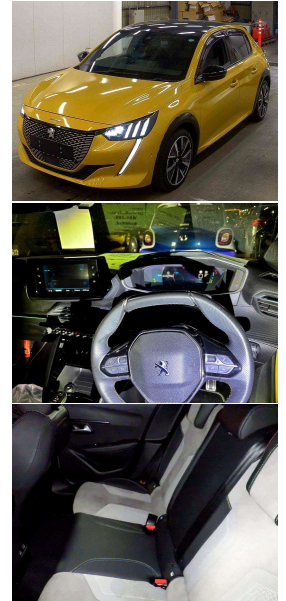
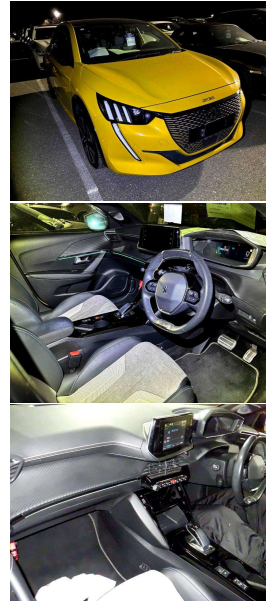


# 2021 Peugeot e-208 GT Line Electric 40kms /



30+ Years Helping Kiwis into Quality Cars  
Trade-Ins Welcome - Finance Specialists



## VEHICLE INFORMATION

### Cash Price

Includes GST

**\$28,560**

+ on-road-costs

Finance this vehicle  
from only

**\$180.76**

per week\*



Gain peace of mind  
with Mechanical  
Breakdown  
Insurance. Ask us  
how.

### Body

5 door, Hatchback

### Odometer

40,184 km

### Engine

-

### Fuel Type

Electric

### Transmission

Automatic

### Fuel Saver Rating

-

### VIN

-

### Reg No.

-

### Ext Colour

Yellow

### History

-

### Seats

5 seats

### Interior

-

### Audio

-

### Stock ID

61532

## Features / Comments

Arriving at the end of May - Secure now with a deposit subject to a satisfactory AA Appraisal  
SPECIAL OFFER - Get a BONUS Fast AC Wall Box for home charging (Install additional)

Hatchback version of the popular Peugeot e-208 SUV, the e-208 is a sporty, stylish very well optioned EV hatchback

2021 Peugeot e-208 GT Line 5 Door Hatchback

Powerful 100kW Electric Drive Motor

Battery:

50kWh Battery delivering approx 300kms on a full charge\*

Includes our EV Life Package

- 12 Month Battery and Electric Warranty



Auckland, Phone 09 525 5885, Email hayden@gvi.kiwi  
575 Great South Road, Penrose, Auckland

\*Finance calculation based on a 36 month term, 20.0% deposit and a and with an example annual fixed interest rate of 12.25%. Actual interest rate may be higher or lower. Includes an establishment fee of \$395 and a monthly maintenance fee of \$8.50. Full term amount payable of \$33,910 (\$28,198 finance + \$5,712 deposit). Estimate only, not an offer of finance. Terms, conditions and lending criteria apply.