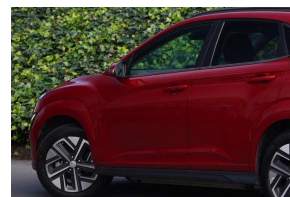


2021 Hyundai Kona EV 64kWh 97% SOH / NZ



VEHICLE INFORMATION

Cash Price

Includes GST

\$36,880

+ on-road-costs

Body
5 door, SUV

Odometer
56,750 km

Engine

-

Fuel Type
Electric

Transmission
Automatic

Fuel Saver Rating
6 out of 6 stars

VIN

-

Reg No.

NYT677

Ext Colour
Red

History

-

Seats
5 seats

Interior

-

Audio

-

Stock ID

61954

Finance this vehicle
from only

\$231.96

per week*



Gain peace of mind
with Mechanical
Breakdown
Insurance. Ask us
how.

Features / Comments

Ready to make the move to an Electric Vehicle but wanting something different from the Nissan Leaf and Tesla Model 3? Looking for massive range without a massive price tag? Here you go

The Kona Electric with huge 64kWh Battery is a range monster delivering about 450kms per charge*

Its crossover SUV format gives increased ground clearance and an easy entry / exit without having to climb up / out of the vehicle

2021 Hyundai Kona EV 64KWH 150KW/EV/FD Gen II
150kW Electric Drive Motor Automatic

Super Healthy 97.2% SOH (State of Health) Battery at recent test



Auckland, Phone 09 525 5885, Email hayden@gvi.kiwi
575 Great South Road, Penrose, Auckland

*Finance calculation based on a 36 month term, 20.0% deposit and a and with an example annual fixed interest rate of 12.25%. Actual interest rate may be higher or lower. Includes an establishment fee of \$395 and a monthly maintenance fee of \$8.50. Full term amount payable of \$43,561 (\$36,185 finance + \$7,376 deposit). Estimate only, not an offer of finance. Terms, conditions and lending criteria apply.