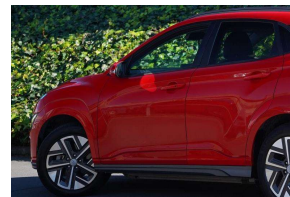


# 2021 Hyundai Kona EV 64kWh 95% SOH / NZ



30+ Years Helping Kiwis into Quality Cars  
Trade-Ins Welcome - Finance Specialists



## VEHICLE INFORMATION

### Cash Price

Includes GST

**\$33,880**

+ on-road-costs

Body  
5 door, SUV

Odometer  
60,752 km

Engine

-

Fuel Type  
Electric

Transmission  
Automatic

Fuel Saver Rating  
6 out of 6 stars

VIN

-

Reg No.

NYT673

Ext Colour  
Red

History

-

Seats  
5 seats

Interior

-

Audio

-

Stock ID

61956

Finance this vehicle  
from only

**\$213.50**

per week\*



Gain peace of mind  
with Mechanical  
Breakdown  
Insurance. Ask us  
how.

## Features / Comments

Ready to make the move to an Electric Vehicle but wanting something different from the Nissan Leaf and Tesla Model 3? Looking for massive range without a massive price tag? Here you go

The Kona Electric with huge 64kWh Battery is a range monster delivering about 450kms per charge\*

Its crossover SUV format gives increased ground clearance and an easy entry / exit without having to climb up / out of the vehicle

2021 Hyundai Kona EV 64KWH 150KW/EV/FD Gen II  
150kW Electric Drive Motor Automatic

Very Healthy 95.3% SOH (State of Health) Battery at recent test



Auckland, Phone 09 525 5885, Email hayden@gvi.kiwi  
575 Great South Road, Penrose, Auckland

\*Finance calculation based on a 36 month term, 20.0% deposit and a and with an example annual fixed interest rate of 12.25%. Actual interest rate may be higher or lower. Includes an establishment fee of \$395 and a monthly maintenance fee of \$8.50. Full term amount payable of \$40,081 (\$33,305 finance + \$6,776 deposit). Estimate only, not an offer of finance. Terms, conditions and lending criteria apply.